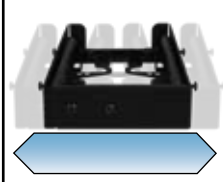
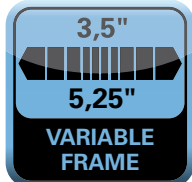


VIBE FIXER PRO

Multifunctional, customizable mounting frame



FOR 2.5" & 3.5"
DEVICES



Features:

- Suitable for 2.5" and 3.5" devices such as HDDs and SSDs
- Fits into standard 3.5" and standard 5.25" mounting bays
- Decoupled mounting for HDDs
- Mounting option for additional fan (80 mm or 120 mm)
- Dimensions: 156 x 98/144 x 32 mm (L x W x H)
- Weight: 154 g

Package:



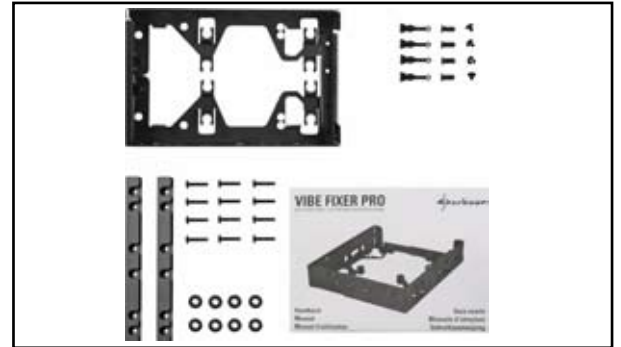
PU: 40
Dimensions: 520x362x262 mm
Weight: 13 kg
Customs tariff no.: 40169991
Country of origin: China

Dimensions: 180x125x50 mm
Weight: 301g

VIBE FIXER PRO

Package contents:

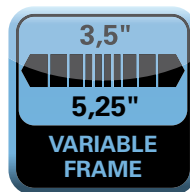
- Mounting frame "Vibe Fixer Pro"
- 8x decouplers
- 2x fixation rails
- 4x fan screws
- 4x metal washers
- 4x rubber bolts for fan mounting
- 4x fixation screws for mounting frame (3 mm, fine thread)
- 4x mounting screws for mounting frame (15 mm, fine thread)
- 4x mounting screws for 2.5" HDDs (12.5 mm, fine thread)
- 4x mounting screws for 3.5" HDDs (13 mm, coarse thread)
- Manual



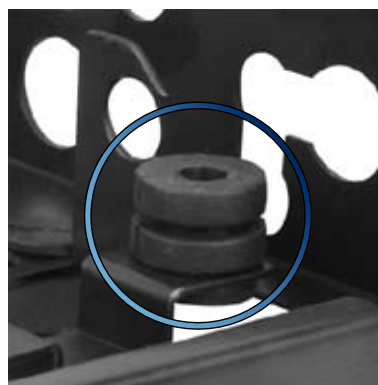
Examples of use:

3.5" mode:

5.25" mode:



2.5" HDD OR SSD



Decoupled HDD mounting



2.5" HDD OR SSD



3.5" HDD

VIBE FIXER PRO

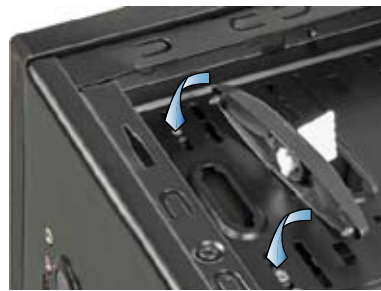
Installation:

3.5" drive bay:



Suitable for mounting rail systems

5.25" drive bay:



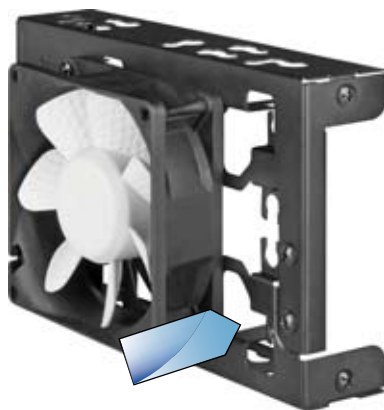
Suitable for quick fastener systems



Suitable for mounting screws

Optional fans:

3.5" mode:



80 mm fan



DECOUPLED MOUNTING



Optional fan mounting with Rubber Bolts OR fan screws

5.25" mode:



120 mm fan